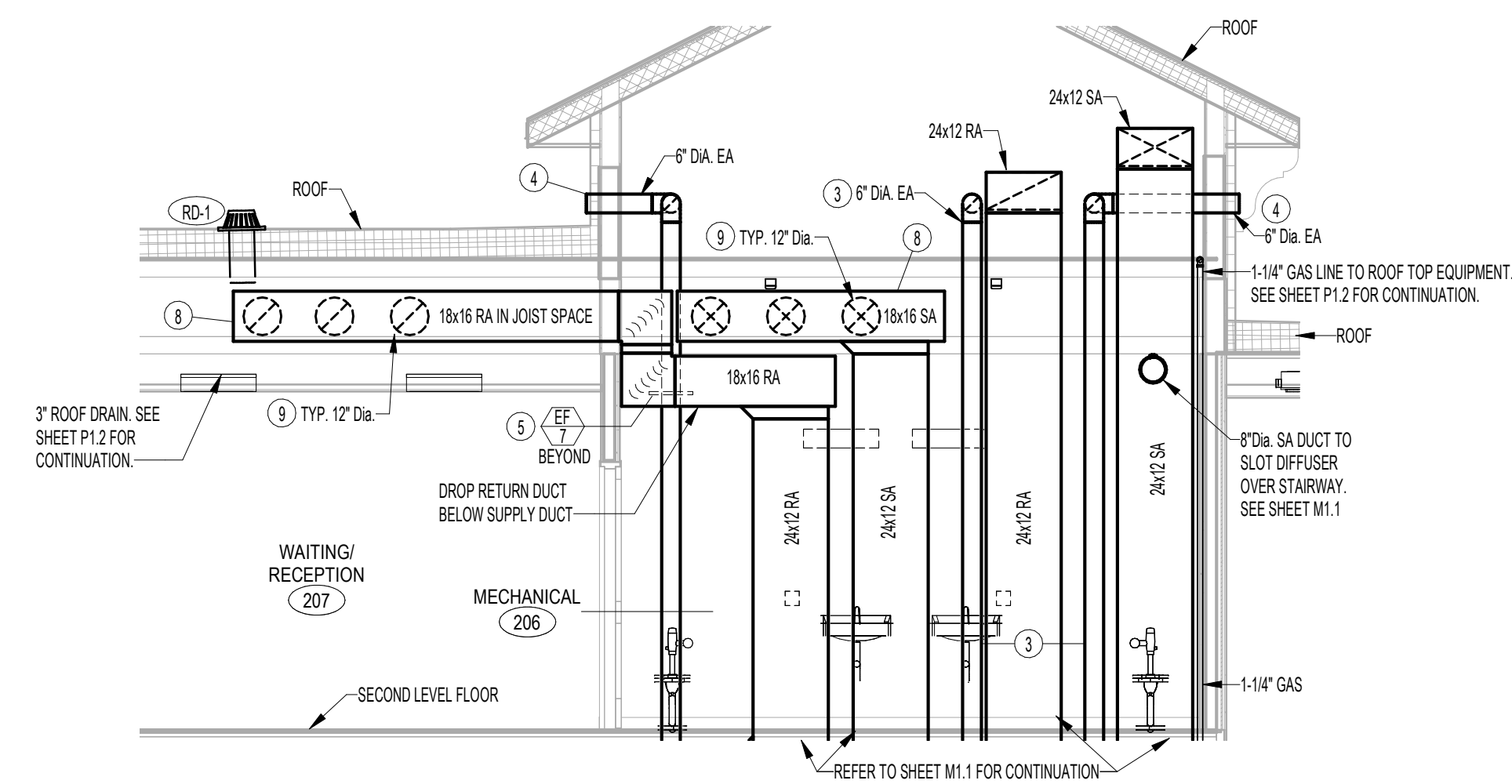
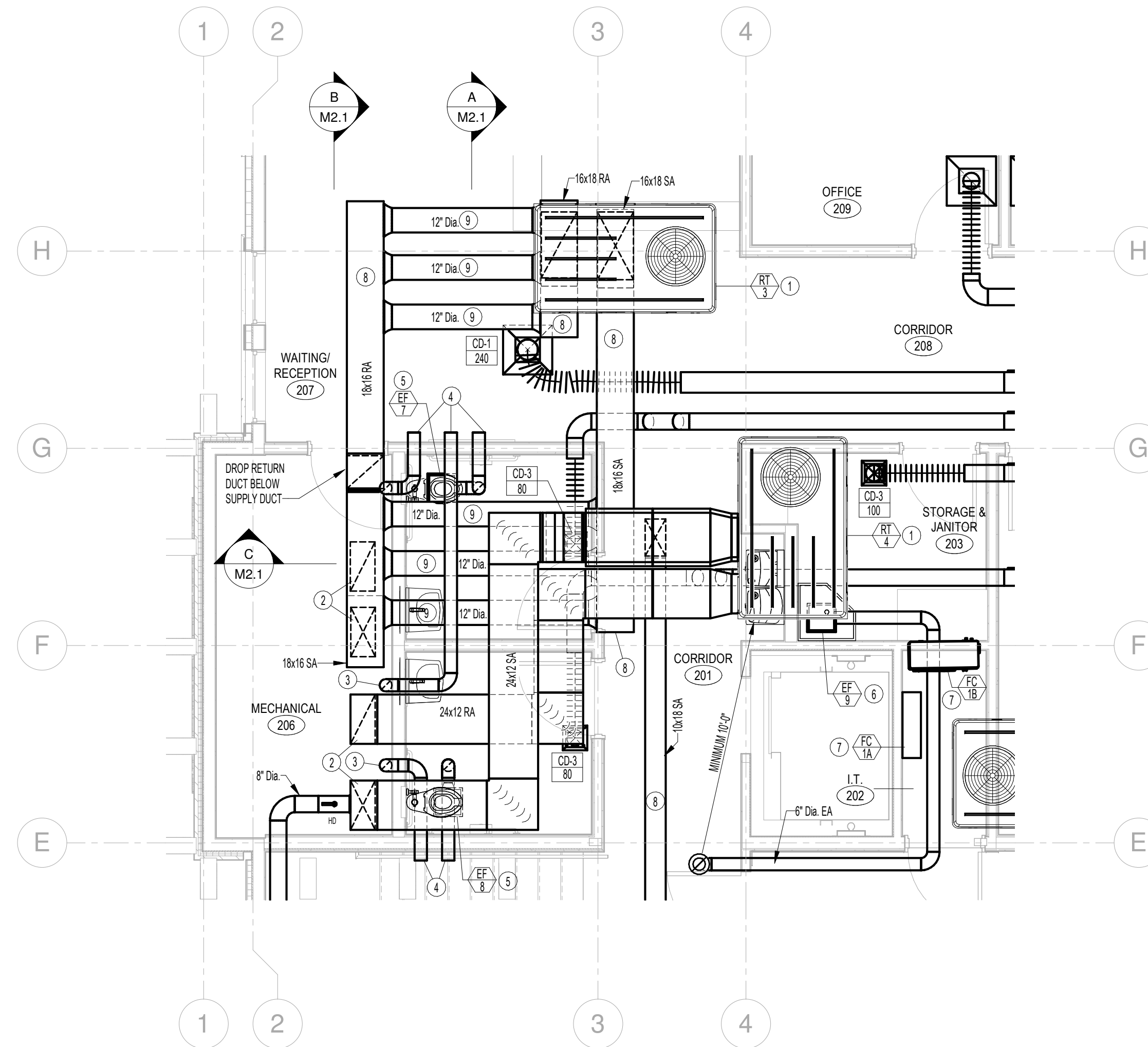


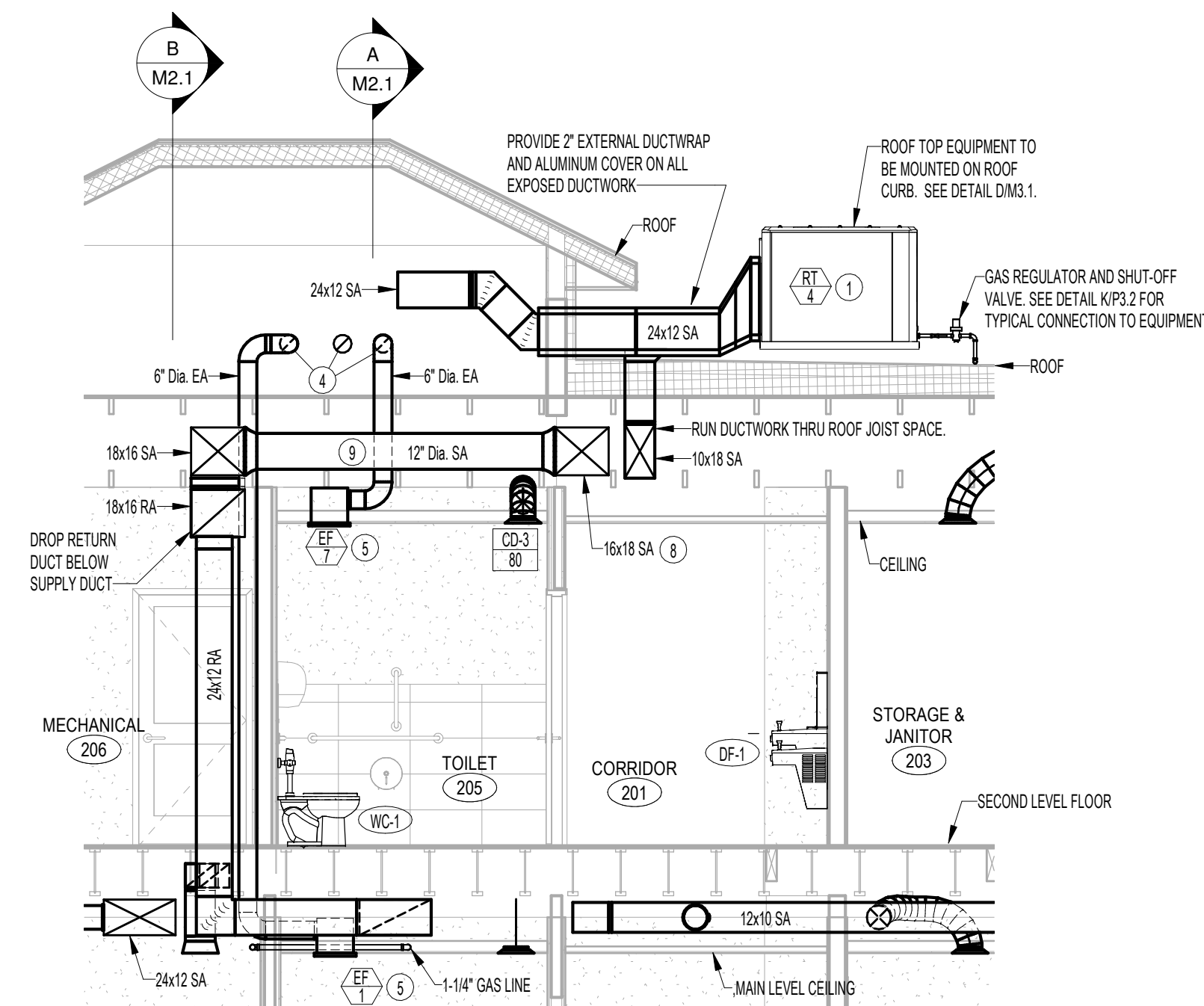
MECHANICAL SECTION A
SCALE: 1/4" = 1'-0"



MECHANICAL SECTION B
SCALE: 1/4" = 1'-0"



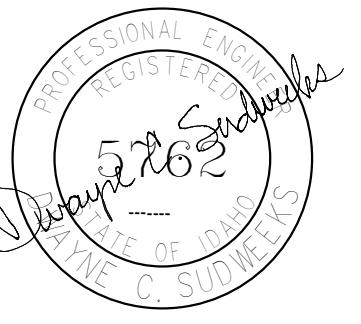
LARGE SCALE MECHANICAL PLAN
SCALE: 1/4" = 1'-0"



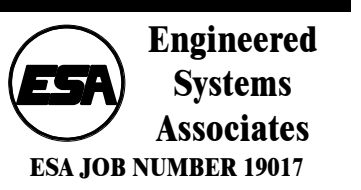
MECHANICAL SECTION C
SCALE: 1/4" = 1'-0"

PLAN NOTES:

- 1 PROVIDE AND INSTALL ROOF TOP EQUIPMENT AS SPECIFIED. MOUNT ON ROOF CURB. PLACE UNIT AS REQUIRED TO DROP SUPPLY AND RETURN DUCTS DOWN BETWEEN ROOF JOISTS. (REFER TO UNITS ON ROOF PLAN - SHEET P1.2)
- 2 DROP DUCTWORK DOWN IN MECHANICAL ROOM TO GROUND FLOOR. REFER TO GROUND FLOOR MECHANICAL PLAN FOR CONTINUATION. COORDINATE WITH FLOOR JOISTS.
- 3 RISE 6" DIAMETER EXHAUST DUCT UP IN MECHANICAL ROOM TO ABOVE CEILING OF SECOND FLOOR. EXTEND THRU WALL WITH WALL CAP.
- 4 TYPICAL 6" DIA EXHAUST DUCT FROM CEILING MOUNTED EXHAUST FAN. RISE UP INTO RAISED ROOF AREA AND EXTEND THRU WALL WITH WALL CAP. REFER TO DETAIL BMS.1 FOR TYPICAL INSTALLATION.
- 5 INSTALL CEILING MOUNTED EXHAUST FAN AS SPECIFIED. RISE 6" DIAMETER EXHAUST DUCT UP INTO RAISED ROOF AREA AND EXTEND THRU WALL WITH WALL CAP. REFER TO DETAIL BMS.1 FOR TYPICAL INSTALLATION.
- 6 INSTALL CEILING MOUNTED EXHAUST FAN AS SPECIFIED. RISE 6" DIAMETER EXHAUST DUCT UP THRU ROOF WITH ROOF CURB AND ROOF CAP. REFER TO DETAIL BMS.1 FOR TYPICAL INSTALLATION.
- 7 PROVIDE AND INSTALL MINI-SPLIT COOLING SYSTEM AS SPECIFIED. MOUNT INDOOR UNIT ON WALL AT 8'-0" ABOVE FLOOR. MOUNT OUTDOOR UNIT ON ROOF WITH PYRAMID TYPE SUPPORTS. (SEE DETAIL DP3.1) INDOOR UNIT TO BE SUPPLIED WITH CONDENSATE PUMP. RISE REFRIGERANT LINES AND 3/4" CONDENSATE DRAIN LINE UP THRU ROOF WITH 4" DIA GOOSENECK. REFER TO DETAILS JP3.2 AND MP3.2 FOR TYPICAL CONNECTIONS AND ROOF PENETRATION.
- 8 RUN MAIN TRUNK DUCTS BETWEEN ROOF JOISTS AS SHOWN. RUN ROUND BRANCH DUCTS THRU JOIST WEBBING. COORDINATE EQUIPMENT AND DUCT LOCATIONS WITH ROOF JOISTS PROVIDED. ADJUST LOCATIONS AND ROUTING AS REQUIRED.
- 9 RUN ROUND DUCTS THRU ROOF JOISTS WEBBING AS SHOWN TO CONNECT (2) MAIN TRUNK DUCTS. COORDINATE WITH JOISTS WEBBING AND KEEP ALL DUCT FROM EACH SYSTEM AS CLOSE TOGETHER AS POSSIBLE.



Ownership & Use of Documents
Drawings and specifications, as instruments of professional service are and shall remain the property of the architect. These documents are not to be used in whole or in part for any project or purposes whatsoever, without the prior specific written authorization of APC Architects PLLC.



no.	description	date

project: 1804

date: 06/06/19

LARGE SCALE MECHANICAL PLANS

sheet:

M2.1